

**Specification Status: Released**

**Maximum Electrical Ratings**

Operating Voltage / Interrupt Current

**30V / 40A**

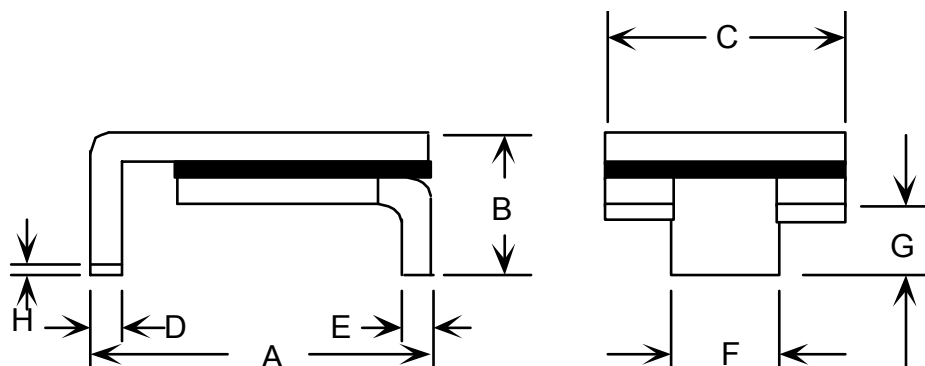
**12V / 60A**

**5V / 125A**

Marking:



Manufacturer's Mark  
 Part Identification



Notes:

1. All metal surfaces are tin plated.
2. Devices cannot be wave soldered.
3. Drawing not to scale.

**TABLE I. DIMENSIONS:**

|      | A       |         | B   |         | C      |         | D       |         | E       |         | F       |         | G       |         | H       |
|------|---------|---------|-----|---------|--------|---------|---------|---------|---------|---------|---------|---------|---------|---------|---------|
|      | MIN     | MAX     | MIN | MAX     | MIN    | MAX     | MIN     | MAX     | MIN     | MAX     | MIN     | MAX     | MIN     | MAX     | MIN     |
| mm:  | 6.73    | 7.98    | --  | 3.18    | 4.8    | 5.44    | 0.56    | 0.71    | 0.56    | 0.71    | 2.16    | 2.41    | 0.66    | 1.37    | 0.43    |
| in*: | (0.265) | (0.314) | --  | (0.125) | (0.19) | (0.214) | (0.022) | (0.028) | (0.022) | (0.028) | (0.085) | (0.095) | (0.026) | (0.054) | (0.017) |

\*Rounded off approximation

**TABLE II. PERFORMANCE RATINGS:**

| CURRENT RATINGS** |      |              |      |              |      | TIME TO TRIP**        | RESISTANCE VALUES | TRIPPED-STATE POWER DISSIPATION** |               |
|-------------------|------|--------------|------|--------------|------|-----------------------|-------------------|-----------------------------------|---------------|
| AMPS AT 0°C       |      | AMPS AT 20°C |      | AMPS AT 60°C |      | SECONDS AT 20°C, 8.0A | OHMS AT 20°C      |                                   | WATTS AT 20°C |
| HOLD              | TRIP | HOLD         | TRIP | HOLD         | TRIP | MAX                   | MIN               | MAX*                              | MAX           |
| 0.84              | 1.68 | 0.75         | 1.50 | 0.49         | 0.98 | 0.3                   | 0.35              | 1.0                               | 1.7           |

\* Maximum resistance is measured 1 hour after reflow.

\*\* Values specified were determined using PCB's with 0.070"X1.5 ounce copper traces.

Reference Documents:

PS300, E.N. SMD 1.0x

Precedence:

This specification takes precedence over documents referenced herein.

Effectivity:

Reference documents shall be the issue in effect on the date of invitation for bid.

CAUTION:

Operation beyond the rated voltage or current may result in rupture, electrical arcing or flame.